

FOR LEASE

## COUNTRY CLUB MARKETPLACE EAST

77-750 TO 77-780 COUNTRY CLUB DRIVE | PALM DESERT, CA



Warehouse Suite  
± 2,405 SF



### DESCRIPTION

- Conveniently located on Country Club Drive with easy access to Washington Street and Interstate 10
- Fully improved suite ready for occupancy February 2020
- Ample parking, including covered parking
- Over 114,110 residents within 5 miles with an average household income of over \$75,000



**Maggie Montez**  
mmontez@leedesert.com  
760.346.2520  
License ID# 01070683

**Shawna Strange**  
sstrange@leedesert.com  
760.346.2533  
License ID# 01718495

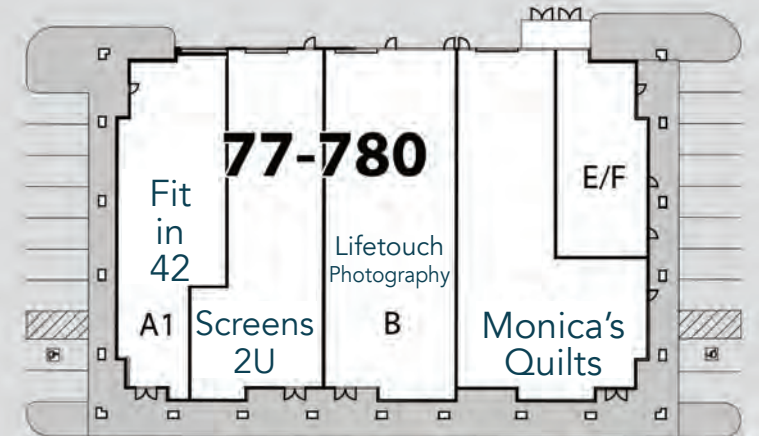
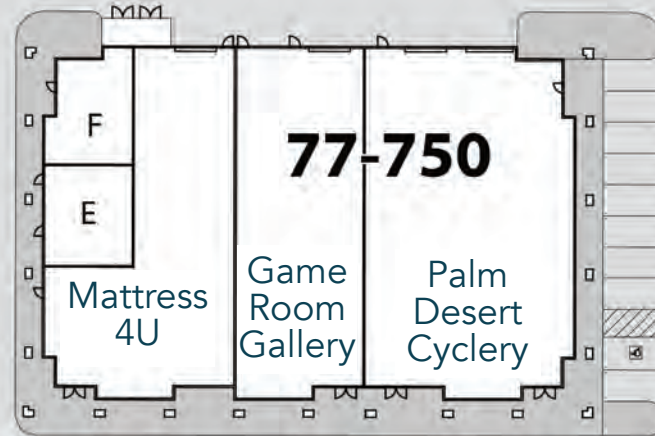
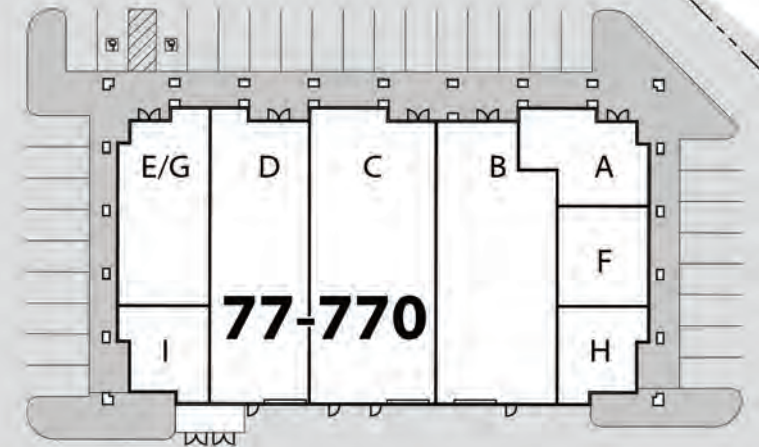
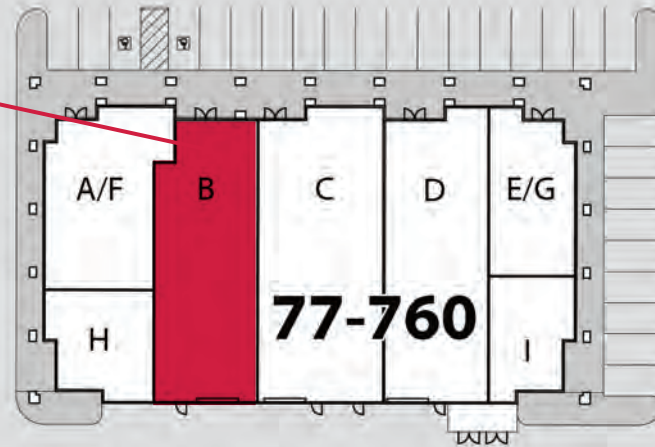
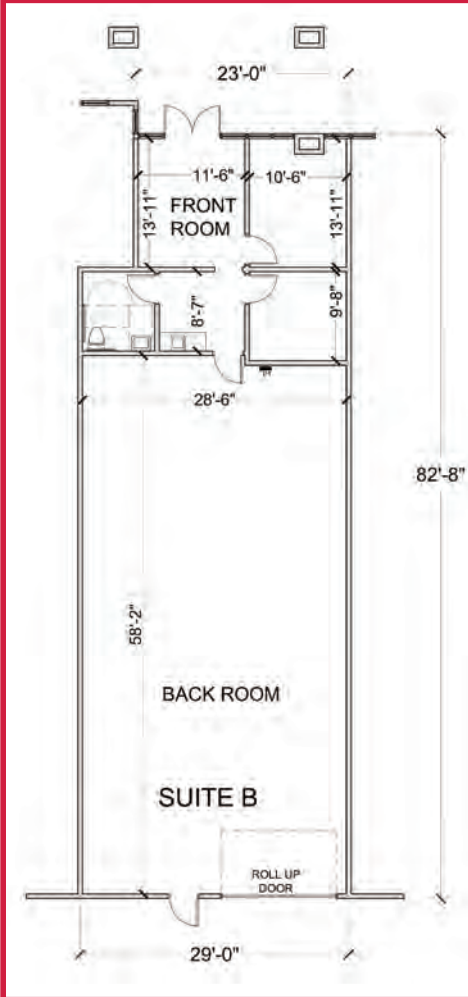
All information furnished regarding property for sale, rental or financing is from sources deemed reliable, but no warranty or representation is made to the accuracy thereof and same is submitted to errors, omissions, change of price, rental or other conditions prior to sale, lease or financing or withdrawal without notice. No liability of any kind is to be imposed on the broker herein.

FOR LEASE

# COUNTRY CLUB MARKETPLACE EAST

77-750 TO 77-780 COUNTRY CLUB DRIVE | PALM DESERT, CA

± 2,405 SF Warehouse  
\$1.15/SF Modified Gross



Country Club Drive

**Maggie Montez**  
mmontez@leedesert.com  
760.346.2520  
License ID# 01070683

**Shawna Strange**  
sstrange@leedesert.com  
760.346.2533  
License ID# 01718495

All information furnished regarding property for sale, rental or financing is from sources deemed reliable, but no warranty or representation is made to the accuracy thereof and same is submitted to errors, omissions, change of price, rental or other conditions prior to sale, lease or financing or withdrawal without notice. No liability of any kind is to be imposed on the broker herein.



FOR LEASE

# COUNTRY CLUB MARKETPLACE EAST

77-750 TO 77-780 COUNTRY CLUB DRIVE | PALM DESERT, CA



**COUNTRY CLUB DR**

**COUNTRY CLUB MARKETPLACE EAST**

**WASHINGTON ST**

Traffic Counts	
Country Club Drive	29,039 CPD
Washington	52,865 CPD

	2019 Demographics	
	3 Miles	5 Miles
Population	48,371	125,850
Number of Households	21,960	52,429
Average HH Income	\$101,121	\$96,182

**Maggie Montez**  
mmontez@leedesert.com  
760.346.2520  
License ID# 01070683

**Shawna Strange**  
sstrange@leedesert.com  
760.346.2533  
License ID# 01718495

All information furnished regarding property for sale, rental or financing is from sources deemed reliable, but no warranty or representation is made to the accuracy thereof and same is submitted to errors, omissions, change of price, rental or other conditions prior to sale, lease or financing or withdrawal without notice. No liability of any kind is to be imposed on the broker herein.